

Who we are

The Public Sector Workers Employees Pension Scheme (PSWEPS) is an Employer Sponsored Occupational Pension Scheme established in January 2018 to manage tier-two pension contributions of some Public Sector Workers. The Scheme is duly registered with the National Pensions Regulatory Authority (NPRA).

PSWEPS was established to consolidate all the Public Sector Institutions which were without schemes, at the time of the Temporary Pension Fund Account Transfer.

The Scheme is managed by a 15-member Board of Trustees with representations from the Trade Union Congress (TUC), Participating Institutions and Government. There is also an appointed Independent Trustee in accordance with the National Pensions Act, 2008 (Act 766) as amended.

Are you a Contributor to PSWEPS?

- Register now and create an account with our Fund Administrator;
- Reconcile your monthly contributions on your statement with the deductions shown on your pay slip; and
- Contact us immediately to address any discrepancies.

Vision

Our vision is to be an excellent pensions trusteeship recognized for professional and dedicated service to members.

Mission

Our mission is to provide accountable and financially secure retirement benefits by ensuring efficient service delivery through technology and effective communication.

Core Values



Accountability



Professionalism



Integrity



Respect



Transparency

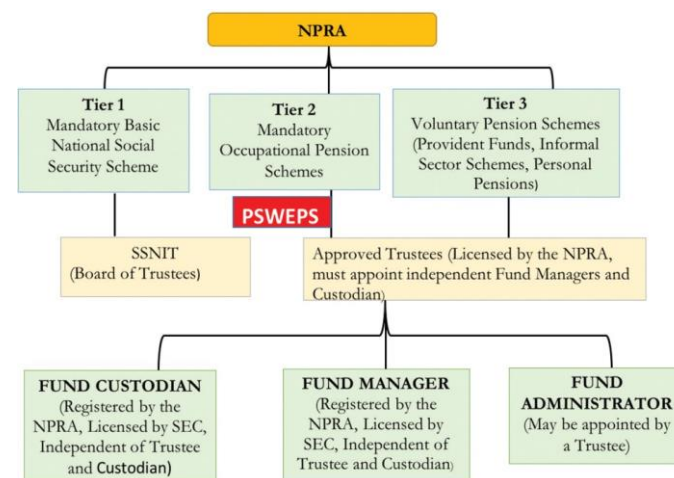


Innovation



Dynamism

Current Pension Structure in Ghana



What is Tier 2 Pension Scheme

- It is a mandatory, defined contribution scheme, funded by 5% of an employee basic salary;
- The employer makes the deductions and pays to the Scheme, on behalf of the employee, on a monthly basis;
- The Scheme pays a **lump sum benefit** to the contributor (or beneficiary) on retirement, death or in the event where a contributor is medically declared to be invalid.
- Total benefit received is made up of total paid up monthly contributions, plus investment returns, less administrative charges.

Why Join PSWEPS

- We are constantly working to keep the passion of ensuring income security for our members after retirement;
- We provide an efficient platform for contributors to access their statements online at anytime;
- We provide pension education to our members; and
- We listen to the ideas and concerns of our members through frequent engagements.

PSWEPS CRM Portal Login

1. Visit <https://psweeps.gov.gh/>
2. Click on < Members Login >
3. Click on < Sign Up>
4. Enter your Staff ID and SSNIT number
5. Select < Register >
6. Enter your Email, Telephone Number and create your Password
7. Click on < Register >
8. Click on < **Start Verification** >
9. **Select the ID Type, enter Ecowas (Ghana) card number and upload a picture of Ghana card (NB: The picture size should be less than 3MB)**
10. Select < Next >
11. Select Method (either SMS or Email)
12. Click < Send Code >
13. Enter Pin Code
14. Click < Verify >
15. Click < Complete Verification >

STEP I: Register and Create Account

- 1 Visit <https://www.gentrustgh.com/>
- 2 Click on Contributor Enrollment Form
- 3 Enter Company Verification Code and click on <verify>
- 4 Enter your SSNIT number and click on <go>
- 5 **You will receive a notification on Account verification. Now Click on <update> to fill in the form.**
- 6 Fill in the form with all the relevant details. You can save the form, exit and come back later to complete it by clicking on <PLEASE CLICK TO SAVE ANY UPDATE>
- 7 A <username> and a <Password> will be generated for you. Please keep the username and the password as secure as possible since you will need it for future logins to view your Statements and update your details.

STEP II: Login to view your Benefit Statement

- 1 Visit <https://www.gentrustgh.com/>
- 2 Click on <individual login>
- 3 Enter your <Username> and <Password> you specified when filling the contributor enrollment form and click <Enter>.
- 4 Click on <Click here to view schemes registered>.

Note: Statements are available on Quarterly Basis

Get The Lump Sum Pension You Deserve

PSWEPS is the choicest Tier 2 Pension Scheme. We are a team of trusted, knowledgeable and dedicated professionals working to maximize value on members' monthly contributions, towards a secured retirement.

We work with the following institutions to provide value and safety to individual contributions.



Contacts

Public Sector Workers Employees' Pension Scheme
P. O. Box 203, Ministries- Osu, Accra.
Location: **NDK Financial Service Building (Omanye Aba)**
Opposite the Accra Sports Stadium
Mezzanine Floor
Tel: **0554528198/ 0506445203/ 0270555203**
Email: **Secretary@psweeps.gov.gh**
info@psweeps.gov.gh
support@psweeps.gov.gh

Visit us on: www.psweeps.gov.gh

